

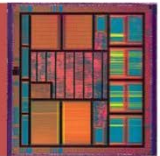
Call for Participation

What is TexasWISE?



Texas Workshop on Integrated System Exploration (TexasWISE) is a one-day workshop to be held in Dallas, TX on April 21, 2017, sponsored by SMU, Texas A&M University, UT Dallas and UT Austin. It will consist of several plenary talks by distinguished speakers in the VLSI area, a student poster session, a panel session and time for interaction with industry and academic participants.

Why Attend TexasWISE?



- ✓ For **industrial professionals**, this is a wonderful opportunity for inspiring new product ideas, recruiting top students at Texas, and networking for future career.
- ✓ For **academic researchers**, this is a precious chance for discovering new research directions, interacting with industrial participants and understanding their research needs.
- ✓ For **students**, this is a great time for learning the latest technology trend, making new friends and finding job opportunities.

Workshop Registration



There will be no registration fee. However, registration is required to secure a seat for you, and it is in a first-come-first-serve basis. Please register on-line at <https://www.smu.edu/Lyle/AboutUs/Calendar/TEXASWISE2017/Registration>

TexasWISE

2017



Program Overview

AM

- Keynote Speakers from Industry, Academia, and Government

PM

- Poster Session
- Keynote Speakers from Industry, Academia, and Government